

January 2023



**OCEAN VIEW
ELEMENTARY**
51 Oceanview School Rd
Eastern Passage, NS
B3J 1J3
Phone: 902-465-8670

A reminder to always report if your child will be absent from school.

Banana Muffins

Ingredients

- 1 ½ cups all-purpose flour
- 1 teaspoon baking powder
- 1 teaspoon baking soda
- ½ teaspoon salt
- 3 large bananas, mashed
- ¾ cup white sugar
- 1 egg
- ⅓ cup butter, melted

Directions

1. Preheat the oven to 350 degrees F (175 degrees C). Grease a 12-cup muffin tin or line cups with paper liners. Sift flour, baking powder, baking soda, and salt together in a bowl; set aside.
2. Mix bananas, sugar, egg, and melted butter in a separate large bowl until well combined, fold in flour mixture until smooth. Spoon batter into the prepared muffin cups, filling each 2/3 full.
3. Bake in the preheated oven until tops spring back when lightly pressed, about 25 to 30 minutes. Cool briefly in the tin, then transfer to a wire rack to cool completely.

ADMIN TEAM'S MESSAGE

Hello Families,

Welcome 2023. We hope this finds everyone well. It is important to keep an eye on your child's health during the cold and flu season. If your student is unwell please keep your child home until they are feeling better.

Please remind your child to check the lost and found often. We have many items piling up—coats, hoodies, boots, hats, mitts and water bottles. Putting your child's name the clothing helps staff to identify the owner of the clothing and return items.

We hope you have a great January.

Andrea Temple, Principal & Keri McLeod, Vice Principal

"You're the BRAVEST when you are CONNECTED"
~Jody Carrington

NUT FREE

Please note that Ocean View Elementary continues to be a Nut-Free environment. We do have students and staff with severe peanut/nut allergies and it is crucial that you do not send your child with any peanut or nut products such as hazelnuts, walnuts, Nutella, cashews, brazil nuts, pine nuts, tree nuts, etc. Thank you for your cooperation with this important matter.

NO PARKING

Please be advised that no vehicles are to be driving on the school grounds at any time during the day. This includes dropping off and picking up students from Excel and/or Pre Primary at the end of the building and parking in the school driveway that is for emergency/authorized vehicles. We appreciate your support in respecting these parking rules to keep our students safe. Please share this information with anyone who may be dropping off or picking up your child. We also remind you to obey the no parking signs in front of the school. When cars are parking in the no parking areas, it is difficult for the buses to maneuver around them safely to get to the school. We have also had concerns with parents/guardians parking in no stopping/no parking areas and the bus loop for Island View. This is against the HRM posted traffic rules.

SAFEARRIVAL BY SCHOOLMESSENGER

One of our greatest priorities is ensuring all students arrive to school safely each day. Parents/guardians of students who attend our school now have the option to report their child's absence in advance using a toll-free number, the PowerSchool Parent Portal or the SchoolMessenger app!

SchoolMessenger SafeArrival – an absence management system that improves student safety and makes it easy for families to inform their child's school if they will be away – powers all three of these options.

If your child will be absent, please let us know by using one of the following methods:

- **Toll-Free Number**—Call 1-833-582-6940 to report an absence using an automated system.
- **PowerSchool Parent Portal** — Log into <https://sishrsb.ednet.ns.ca/public/> and access the SchoolMessenger website to report an absence.
- **SchoolMessenger App**—Download the SchoolMessenger app for Android and iOS devices and sign up using your PowerSchool username (full email address).

For more information about reporting your child's absence and a list of frequently asked questions, visit:
<https://www.hrce.ca/safearrival>

UPCOMING DATES

February 1-28	Registration Month See HRCE website
February 20th	Heritage Day (no classes)
March Break	13-17 (no classes)

BELL TIMES

8:30	- Entrance Bell
10:30- 10:45	- Recess
12:15- 1:15	- Lunch
2:45	- Dismissal – All Grades

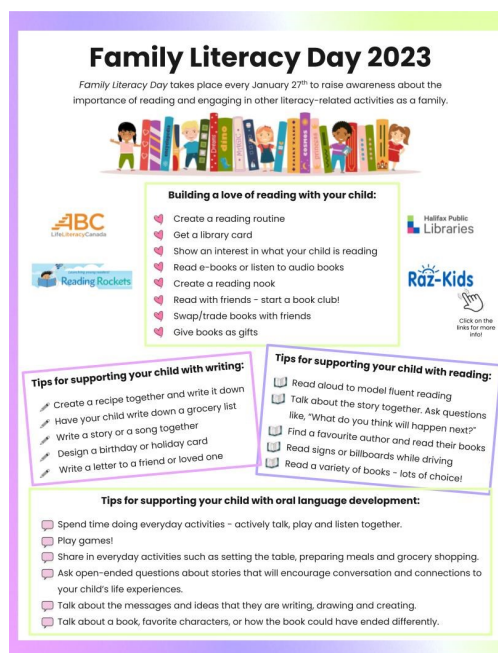
SCHOOL ADVISORY COUNCIL

Currently, ***we still have vacancies for 3 community representatives on our SAC. If you know of anyone from the Ocean View School community who may be interested, please forward them this information.***

School Advisory Councils (SACs) play an important role in supporting student success at the community-level. They are volunteer organizations that receive their authority from the Nova Scotia Education Act. SACs are advisory bodies to individual school principals, regional centres for education (RCEs), and the Conseil Scolaire Acadien provincial (CSAP) on a range of issues related to their local schools and the overall school system. SAC membership can vary, but generally consists of the school principal, parents/guardians, teachers, other school staff, students, and community members. SAC membership should reflect the diversity of the school community.

FAMILY LITERACY DAY 2023

Family Literacy Day takes place each year on January 27th to raise awareness about the importance of reading and engaging in other literacy related activities as a family. This year's theme is Celebrate Your Heritage! Canada is a great diverse country full of different cultures. Use reading as a way to explore and learn about your heritage and the dynamic cultures that make up our communities.



SCHOOL CLOSURE DUE TO WINTER WEATHER CONDITIONS

Winter is Coming: Guidelines for Inclement Weather

Making the decision to alter the regular operations of school and/or school buses due to inclement weather is never an easy task. To learn more about how the Halifax Regional Centre for Education (HRCE) makes this call, visit www.hrce.ca/weather.

When is the decision made?

HRCE's goal is to make the decision as close to 6 a.m. as possible.

A 6 a.m. announcement could be:

- All schools are delayed in opening by two hours and all bus pickups are delayed by two hours; or
 - All schools are open, but some or all buses are not operating for the day; or
 - Some schools (either individually or by family) are closed for the day; or
- All schools are closed for the day.

If the weather deteriorates through the school day, the HRCE can decide to dismiss early. In the event of an early dismissal, the decision will be communicated as close to 11 a.m. as possible.

An 11 a.m. dismissal means:

- Bused students will be picked up two hours earlier than their regular dismissal time; and
- Walking students will be dismissed at their regularly-scheduled lunch hour.

Please Note: students in Grades Primary to 6 will not be released from school until parents/guardians or designates have been notified by the school.

How will families be notified?

- Families will receive an email and text message (*opt-in is required: text Y to 978338*)*

Check our website at www.hrce.ca

Follow us on Twitter at [@HRCE_NS](https://twitter.com/HRCE_NS)

- Call the HRCE information line at 902-464-INFO (4636)

All local radio stations are informed

[Click here](#) for a printable PDF of our guidelines.

